



*OptimaLED*<sup>®</sup>  
ProTour<sup>®</sup>

# LED STADIUM for sports stadiums

Professional LED for stadiums of any size, the most efficient solution.

# LED for sports stadiums

Light designed to replace traditional stadium lighting while retaining the old pole. The weight of the LED light is similar to the traditional fixture but with less wind resistance. Our light is compatible with the high poles of the Highlander series. Made with a pure aluminum structure, the weight is 60% less, but the heat dissipation surface increases by 40%.

## Features

- Light
- Low beam light
- Asymmetric

**150**  
**Lm/W**



Features



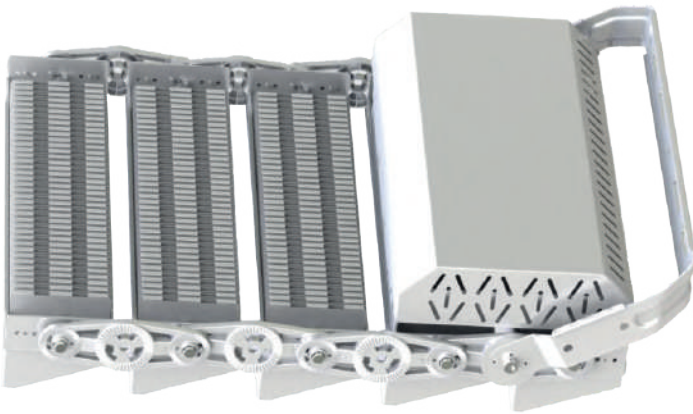
OUTDOOR  
USE



LOW  
GLARE

## Lightweight \_\_\_\_\_

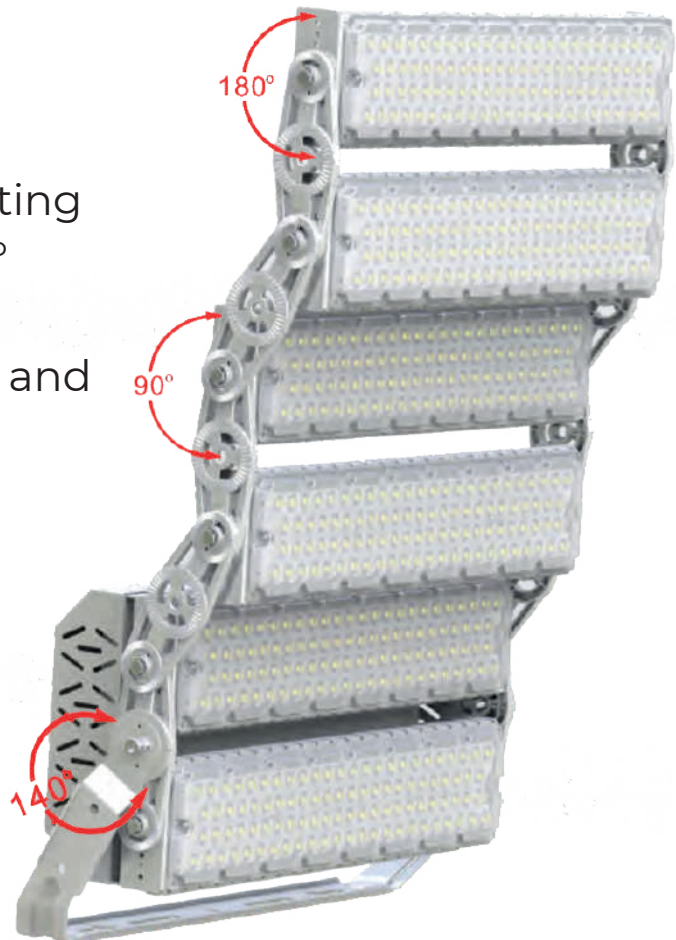
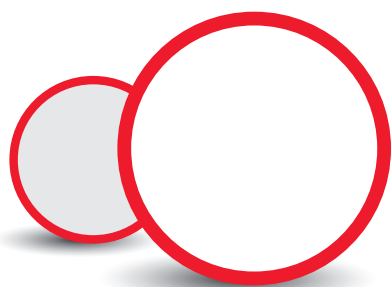
<u>500W</u>	<u>1000W</u>	<u>1200W</u>
9,8 Kg	18,6 Kg	24,0 Kg



Pure aluminum for better heat dissipation

## Precise rotation angle \_\_\_\_\_

Each module is fixed on a rotating bracket that turns it into a 180° rotation structure. The entire fixture can be adjusted by 90°, and the mounting bracket can be adjusted by 140°.





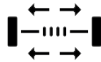
Light visors are used to reduce light pollution and light loss.

Otras Características \_\_\_\_\_



**IP66**

Water protection



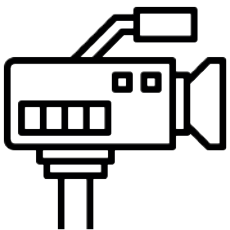
**Overvoltage protection**

6kv/20kv



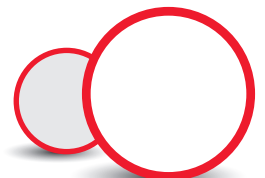
**TVS proteccion**

The TVS with peak capabilities of 1500W in a 10/1000us waveform is used to protect the LEDs from higher voltages, including lightning strikes.



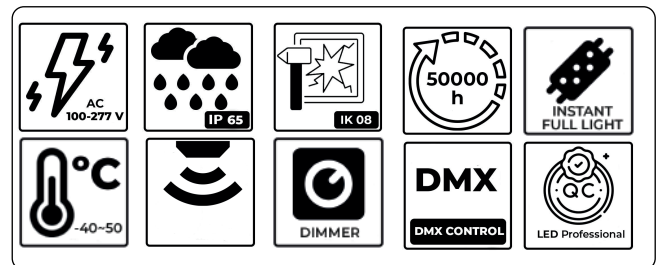
**Excellent for TV transmission**

The LED source has a high TLC index and a color rendering index of up to 90. This provides the camera with the real color of the scene and flicker-free shots.



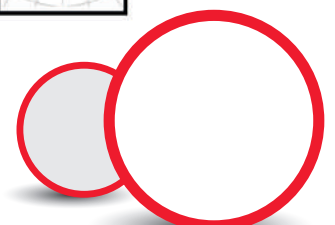
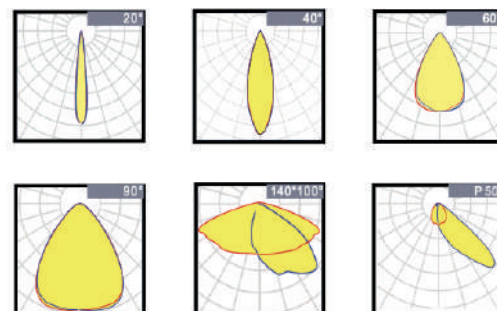
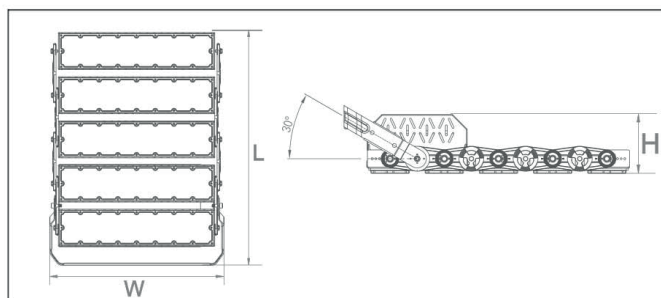
# Technical Specifications

- > **Housing:** Aluminio Puro A6063
- > **Conductivity:** 226 W/m·K
- > **LED:** CREE 5050
- > **CRI:** Ra>70 (Option 80/90)
- > **SDCM:** <6
- > **Power factor :** >0,95
- > **THD:** <15
- > **Driver :** Meanwell
- > **Driver efficiency:** >93 %
- > **Protection:** OTP, OCP, OVP, SCP
- > **Overvoltage protection :** 6KV
- > **Waterproof:** IP65
- > **Impact test:** IK08
- > **Eléctric:** 100-277V, 50/60Hz
- > **Operating temperature:** -40~50 °C
- > **TM21:** L90B10>50,000H
- > **Life Time:** 50,000H



Model	W	V	Lum	CRI	IP	Dimensions
LST-250-OL	125W x 2	220~240V	37500LM	>70	IP65	332*350*160
LST-500-OL	125W x 4	220~240V	75000LM	>70	IP65	628*350*160
LST-750-OL	250W x 3	220~240V	112500LM	>70	IP65	484*587*195
LST-1K0-OL	250W x 4	220~240V	150000LM	>70	IP65	632*587*195
LST-1K2-OL	250W x 5	220~240V	187000LM	>70	IP65	780*587*195
LST-1K5-OL	250W x 6	220~240V	225000LM	>70	IP65	928*587*195

## Optic options



# *Optima*LED<sup>®</sup> ProTour<sup>®</sup>

## LIGHTING EVOLUTION

---

### FORGING THE PATH TO A BRIGHT FUTURE

In an increasingly energy-efficient and sustainable-conscious world, quality is THE fundamental aspect for our company. We are committed to providing products that meet the highest standards of performance, durability, and safety. We conduct rigorous testing on our products and use quality components to ensure reliable long-term operation.

We invest in R&D to stay at the forefront of LED technology, continuously researching and developing new solutions to enhance the efficiency, durability, and versatility of our products. We stay abreast of the latest trends and advancements in the industry, enabling us to offer innovative solutions and stay ahead of the competition.

Experience, knowledge, and a commitment to quality and sustainability make us market leaders. We drive the shift towards



**WWW.OPTIMALED.EU**

---

**C/ Geológicas, 62  
28923 Madrid - Spain**

**PHONE  
+34 916357859**

---