



## **INDUSTRIAL LED JAKARTA**

### **ATEX-ANTIEXPLOSIVE PROFESSIONAL LIGHTING**

The JAKARTA Led light is the ideal solution for lighting any space, especially indicated in industrial areas.



“

PROFESSIONALS  
WITH A WIDE  
RANGE OF  
POWER.  
MAXIMUM  
EFFICIENCY

”

## JAKARTA LED

The Jakarta series explosion proof JAKARTA light is designed to operate efficiently and economically in areas that may be difficult to maintain, with shutdown difficulties or in LED any location that requires a higher degree of security.

Compared to conventional lighting, it consumes up to 85% less energy and has a lifespan of at least 50,000 hours.

# LED FEATURES



## > II 2G Ex eb mb IIC T6 Gb II 2D Ex tb IIIC T(110°C) Db

With ATEX certification, our explosion-proof light can be used widely materials explosives. Bridgelux LEDs in combination with the specially designed driver for the assembly are used to ensure safety and long life.



## > WF2 Anticorrosive

In harsh environments, the anti-corrosion level can reach Wf2. The surface of the lamp body is treated by high-voltage electrostatic spraying, which has the characteristics of high corrosion resistance and oxidation prevention, and is especially suitable for work with a high degree of oxidation.



## > IP66

It incorporates a special silicone sealing ring, which has the characteristics of anti-aging, high and low temperature resistance and strong sealing performance; With high precision machining technology, the protection level of the product can reach IP66.

# LED FEATURES

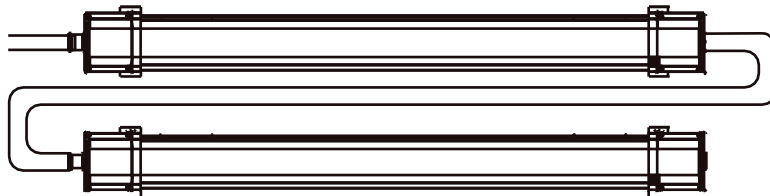
## CONNECTION CABLE

With 3x2.5mm<sup>2</sup> wiring and clips on both sides, can be connected in series to save installation costs.



## SERIES JOIN

3\*2.5 MM<sup>2</sup> CABLE OR 1MT PRE-INSTALLED CABLE.



## Great Heat Conductivity

A6063 aluminum alloy material.



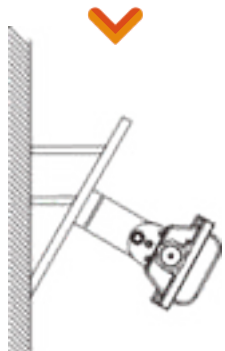
150  
Lm/W

Dissipation design  
structural heat.

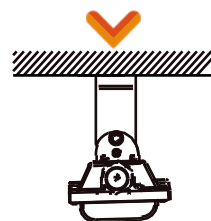
®

# PLACEMENT EXAMPLES

ON WALL



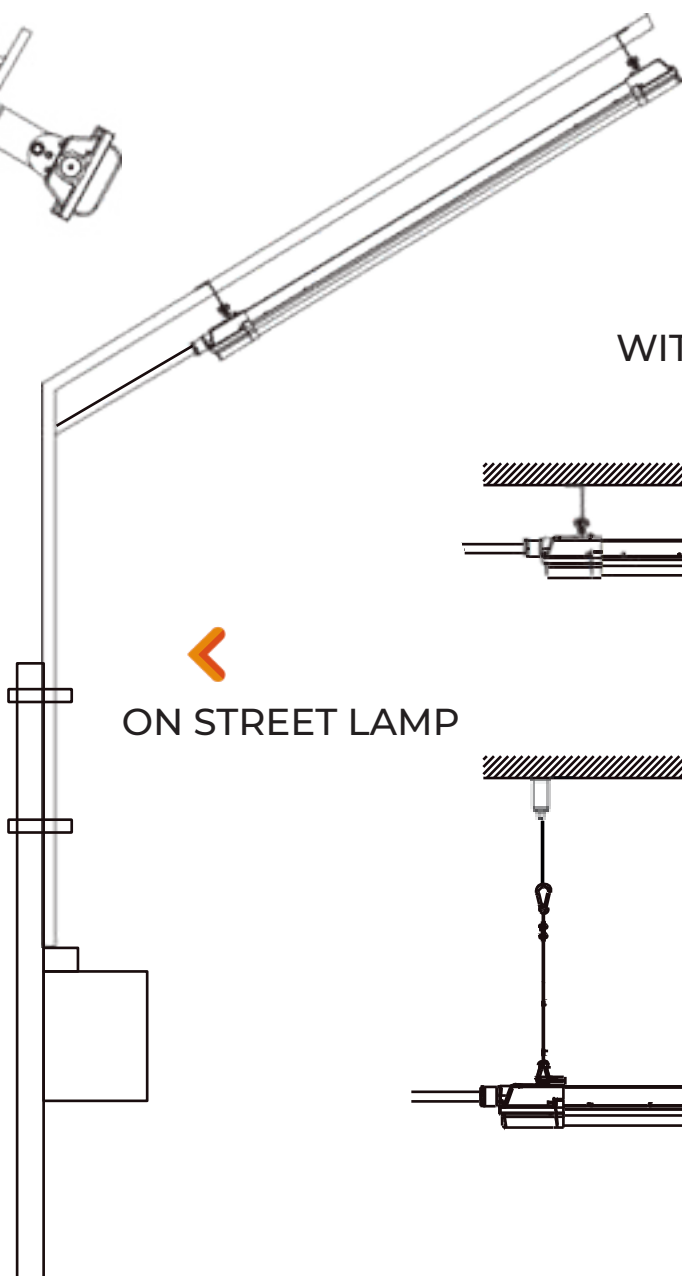
CENITAL



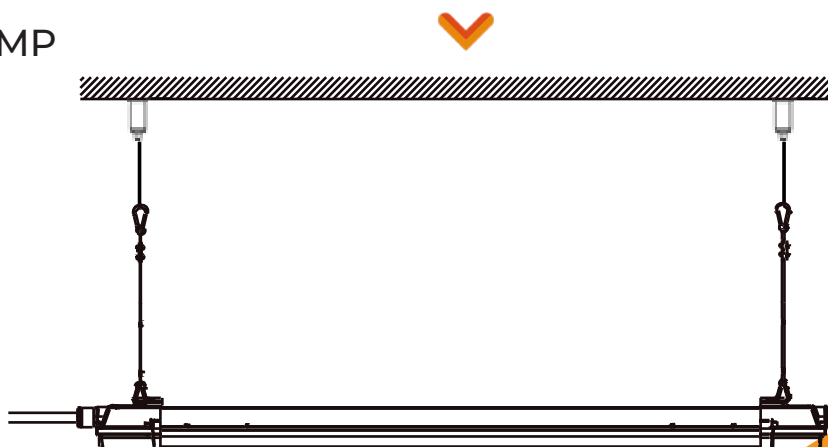
WITH ADJUSTABLE SUPPORT



ON STREET LAMP



SUSPENSION



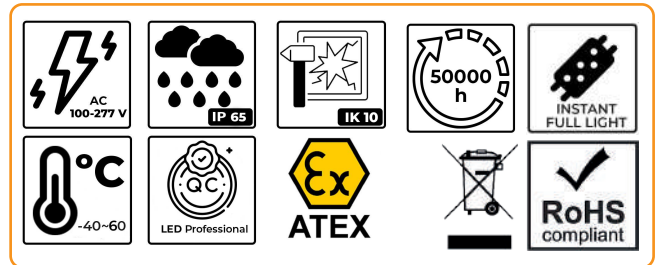
©

# TECHNICAL CHARACTERISTICS

- > **Housing:** Pure Aluminum A6063
- > **Conductivity:** 226 W/m K
- > **LED:** Bridgelux
- > **CRI:** Ra>80
- > **SDCM:** <6
- > **Power factor:** >0.95
- > **THD:** <15
- > **Power Supply:** Explosion Proof Driver
- > **Driver efficiency:** >92%
- > **Protection:** OTP, OCP, OVP, SCP
- > **Surge protection:** 4KV
- > **Waterproof:** IP65
- > **Corrosion:** WF2
- > **Impact test:** IK10
- > **Power:** 100-277V, 50/60Hz
- > **Operating temperature:** -25~45 °C



TM21: L90B10>50,000H

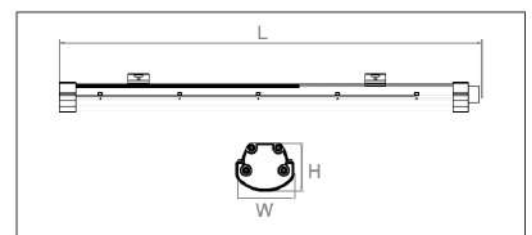
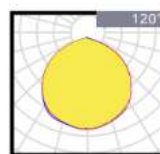


## EXTRAS CUSTOM MANUFACTURING



Model	W	V	Lum	CRI	IP	Dimensions
ATEXJ20EE2H-5K	20W	100~277V	3000LM	>80	IP66	L600*W70*H58MM
ATEXJ40EE2H-5K	40 W	100~277V	6000LM	>80	IP66	L600*W70*H58MM
ATEXJ40EE4H-5K	40W	100~277V	3000LM	>80	IP66	L600*W70*H58MM
ATEXJ60EE4H-5K	60 W	100~277V	6000LM	>80	IP66	L600*W70*H58MM
ATEXJ80EE4H-5K	80 W	100~277V	6000LM	>80	IP66	L600*W70*H58MM

## OPTICS OPTIONS



+34 916357859



WWW.OPTIMALED.EU

# OptimaLED<sup>®</sup> ProTour<sup>®</sup>

LIGHTING **EVOLUTION**

“ LEADING THE  
WALK TO  
A FUTURE  
BRIGHT ”



[WWW.OPTIMALED.EU](http://WWW.OPTIMALED.EU)

C/ Geológicas, 62  
28923 Madrid - Spain

PHONE  
+34916357859