



LED Floodlight **MANCOR**

PROFESSIONAL LIGHTING

Available in various powers, equipped with efficient CREE LEDs and an OSRAM brand power supply.



LED Floodlight MANACOR 120°, 150LM/W

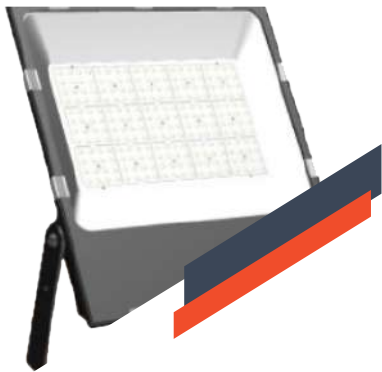
“ The MANACOR LED projector spotlight available in various powers and equipped with efficient CREE international brand LEDs and OSRAM driver technology, our spotlights offer users not only the superior quality of lighting indoors and outdoors, but also supreme reliability.

PROFESSIONAL
LED SPOTLIGHTS
WITH WIDE
RANGE OF
POWERS.
MAXIMUM
EFFICIENCY

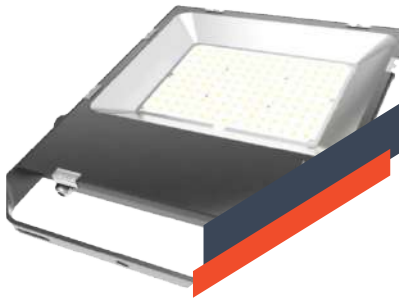
” With uniform photometric distribution, this LED spotlight achieves high luminous efficiency with 150Lm/w.

Thanks to a robust aluminum housing with a safety glass cover, the IP65 certified floodlight is ideal for outdoor lighting, as a wall mount around building facades, gardens, sports courts such as paddle tennis or tennis and even parking lots. outdoor.

LED FEATURES



- > High performance with efficiency of 150 Lm/W
- > L80/B10 @25C° 50,000H lifespan
- > SDCM<6
- > HR >0.95
- > THD < 15%
- > Nominal Voltage: 220-240V
- > Class I insulation



- > Robust aluminum structure
- > Hermetic equipment with IP65
- > High impact resistance of IK08
- > Suitable for outdoor use
- > Temperature from -40°C to +50°C
- > Static Integrated Controller

150*
Lm/W
REAL

REAL LUM W - Lm

| | |
|-------|---------|
| 100 W | 15000LM |
| 150 W | 22500LM |
| 200 W | 30000LM |

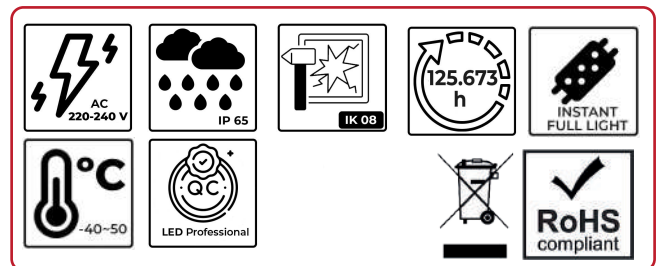


DRIVER
OSRAM

CHIP
CREE

TECHNICAL CHARACTERISTICS

- Housing: ADC12 Cast Aluminum
- Conductivity: 96 W/m K
- LED: CREE
- CRI: Ra>70 (80)
- SDCM: <6
- Power factor: >0.95
- THD: <15
- Power Supply: OSRAM- 220-240V, 50/60Hz
- Driver efficiency: >90%
- Protection: OTP, OCP, OVP, SCP
- Surge protection: 6KV
- Waterproof: IP65
- Impact test: IK08
- Operating temperature: -40~50 °C
- TM21: L80B10>50,000H

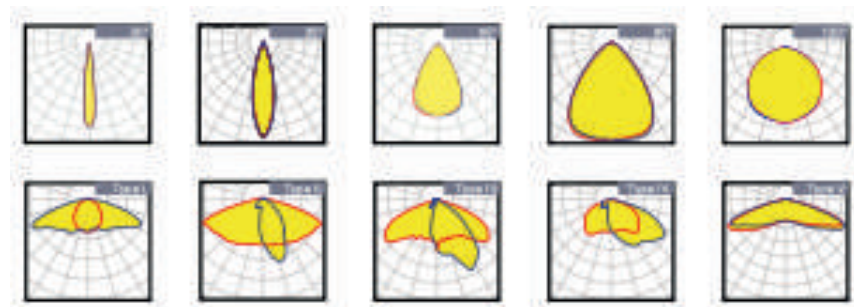
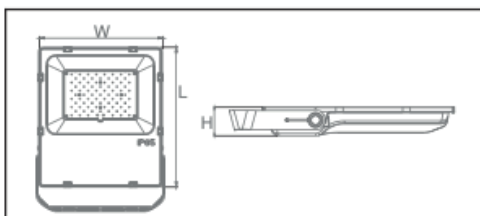


EXTRAS CUSTOM MANUFACTURING



| Model | W | V | Lum | CRI | IP | Dimensions |
|--------------|-------|----------|---------|----------|------|-------------------|
| MA100-120-6K | 100 W | 220~240V | 15000LM | >70 (80) | IP65 | L402.5*W295*H60MM |
| MA150-120-6K | 150 W | 220~240V | 22500LM | >70 (80) | IP65 | L430.5*W330*H60MM |
| MA200-120-5K | 200 W | 220~240V | 30000LM | >70 (80) | IP65 | L470.5*W360*H60MM |

OPTICS OPTIONS



+34 916357859



WWW.OPTIMALED.EU

OptimaLED[®] ProTour[®]

LIGHTING **EVOLUTION**

“

LEADING THE
WALK TO
A FUTURE
BRIGHT

”



WWW.OPTIMALED.EU

C/ Geológicas, 62
28923 Madrid - Spain

PHONE
[+34 916357859](tel:+34916357859)